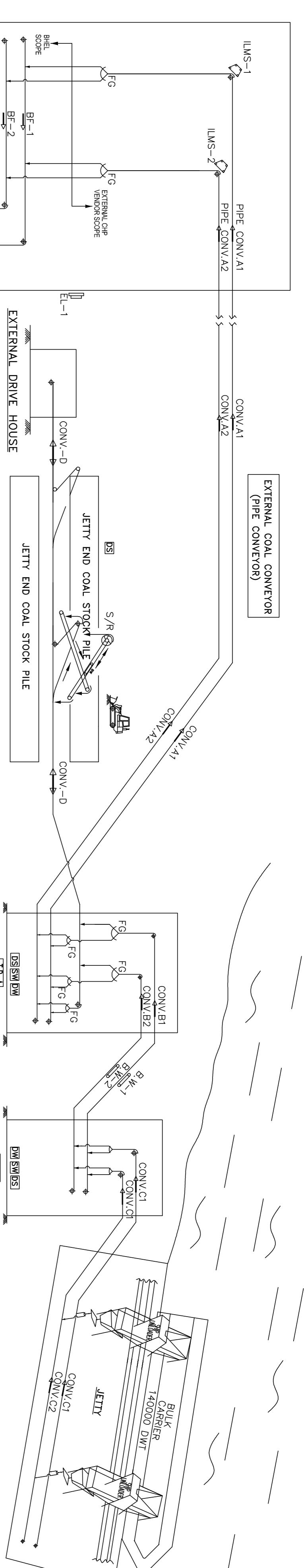


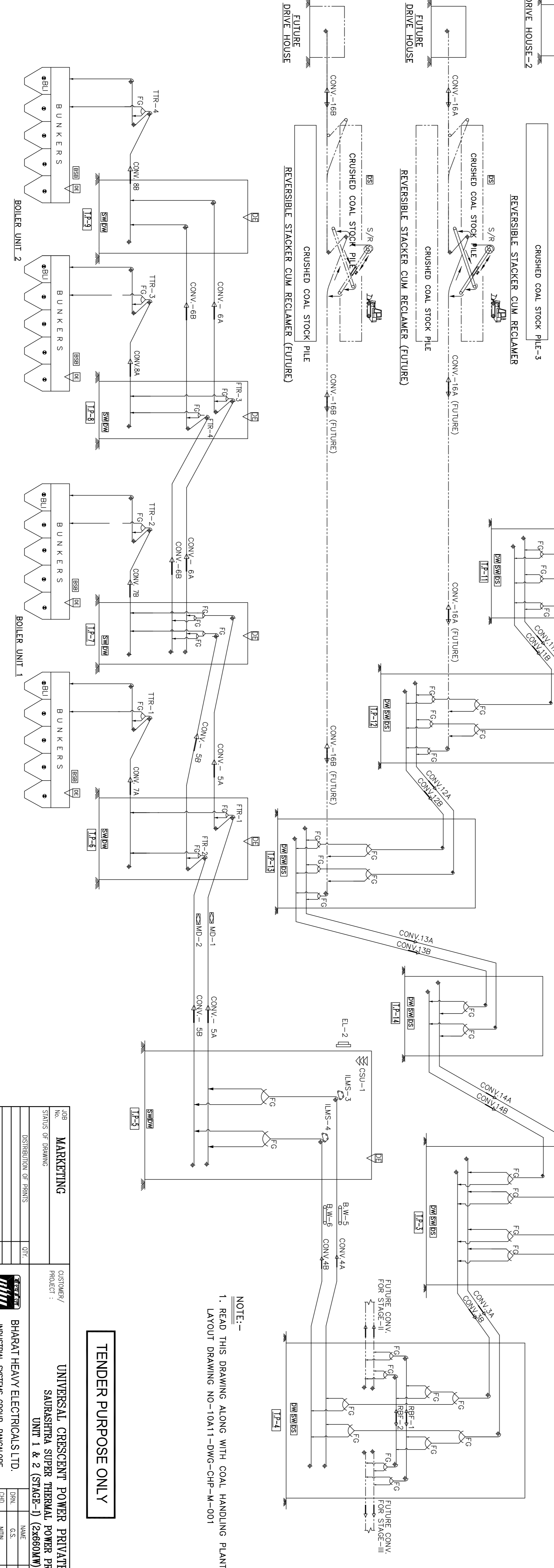
EQUIPMENT CAPACITY TABLE

S.L. NO.	EQUIPMENT DESCRIPTION	CAPACITY (DESIGNED)	CAPACITY (RATED)
1	BELT CONVEYOR	3600 TPH	3280 TPH
2	BELT FEEDER / REV.BELT FEEDER	3600 TPH	3280 TPH
3	TRAVELLING TRIPPER	3600 TPH	3280 TPH
4	STACKER CUM RECLAIMER	3600 TPH/STACKING 3600 TPH/RECLAIMING	3280 TPH/STACKING 3280 TPH/RECLAIMING
5	BELT WEIGHER	3600 TPH	3280 TPH
6	ELEVATOR	1000 Kg	1000 Kg



LEGEND

	BELT CONVEYOR
	BELT WEIGHER
	BELT FEEDER
	REVERSIBLE BELT FEEDER
	COAL SAMPLING UNITS
	METAL DETECTOR
	IN-LINE MAGNETIC SEPARATOR
	LMS
	MD
	ELECTRICAL OPERATED FLAP GATE
	DUST SUPPRESSION
	SERVICE WATER
	DRINKING WATER
	ELEVATOR
	DUST EXTRACTION
	BUNKER SEALING BELT
	BUNKER LEVEL INDICATOR
	STACKER CUM RECLAIMER(S)
	FIXED TRIPPER
	TRAVELLING TRIPPER
	DOZER



NOTE:-
1. READ THIS DRAWING ALONG WITH COAL HANDLING PLANT LAYOUT DRAWING NO-10A11-DWG-CHP-M-001

TENDER PURPOSE ONLY

INVENTORY NO.	SIGN & DATE	REF.DWG.NO.
1	2	3
4	5	6
7	8	9
10	11	12

REV.	NAME	DATE	ZONE
ALTERED			
CHECKED			
APPROVED			

REV.	NAME	DATE	ZONE
ALTERED			
CHECKED			
APPROVED			

JOB No.	MARKETING
STATUS OF DRAWING	
DISTRIBUTION OF PRINTS	
QTY	
NAME	DATE
ALTERED	
CHECKED	
APPROVED	

CUSTOMER / PROJECT :	UNIVERSAL CRSCENT POWER PRIVATE LIMITED SAURASHTRA SUPER THERMAL POWER PROJECT UNIT 1 & 2 (STAGE-I) (2x660MW)
DIRECTOR / SAURASHTRA INDUSTRIAL SYSTEMS GROUP, BANGALORE	
SCALE	N.T.S.
WEIGHT (KGS)	
DATE	14.12.2011
CHKD.	
MINI	14.12.2011
EX.	
REF TO ASSY/DWG	
NO. OF SHEETS	01
NO. OF SHEETS	01
NO. OF SHEETS	00

FLOW DIAGRAM FOR COAL HANDLING PLANT

CHP-02